

**Shellard Lane Development Integrated MCEA
Public Information Centre #2
Comment Sheet**

The LIV Community Development Landowners Group (Landowners Group) is proposing to develop lands which include properties north of Shellard Lane within Area C Lands of the Special Policy Area 20. In support of a future site plan and the required collector roads, the Landowners Group is completing an Integrated Municipal Class Environmental Assessment.

The subject lands are located in the southwest quadrant of the City of Brantford and generally lie between Shellard Lane and the CN Rail Trail.

PIC materials will be available online at:

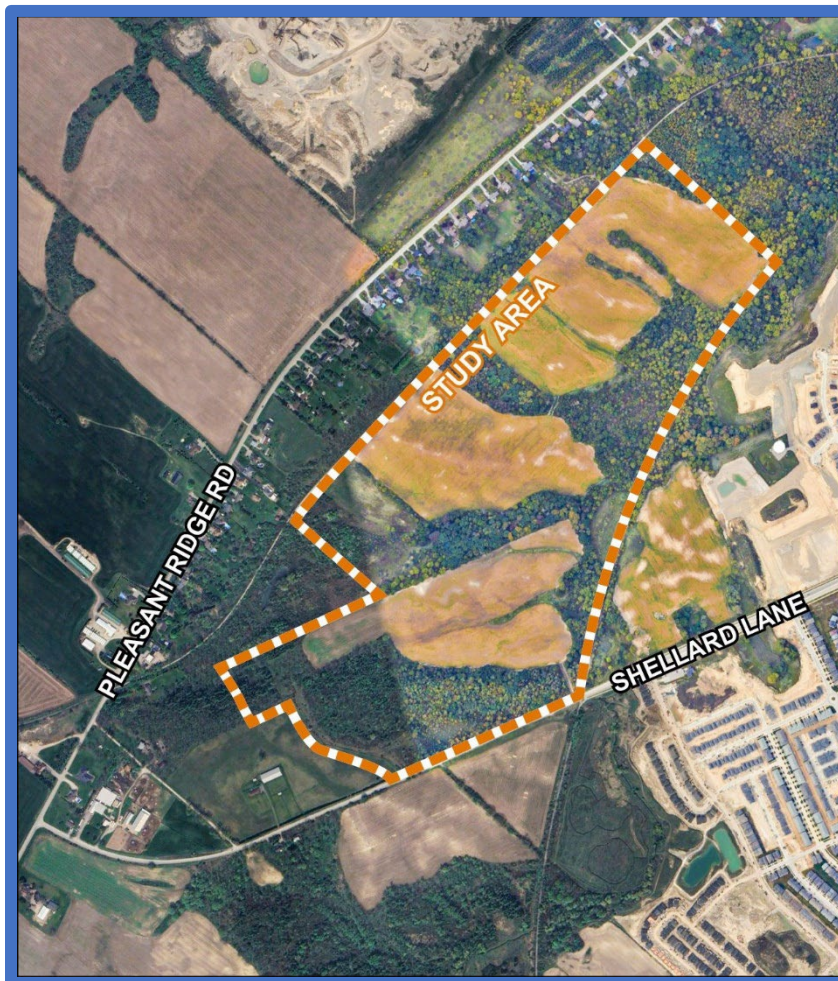
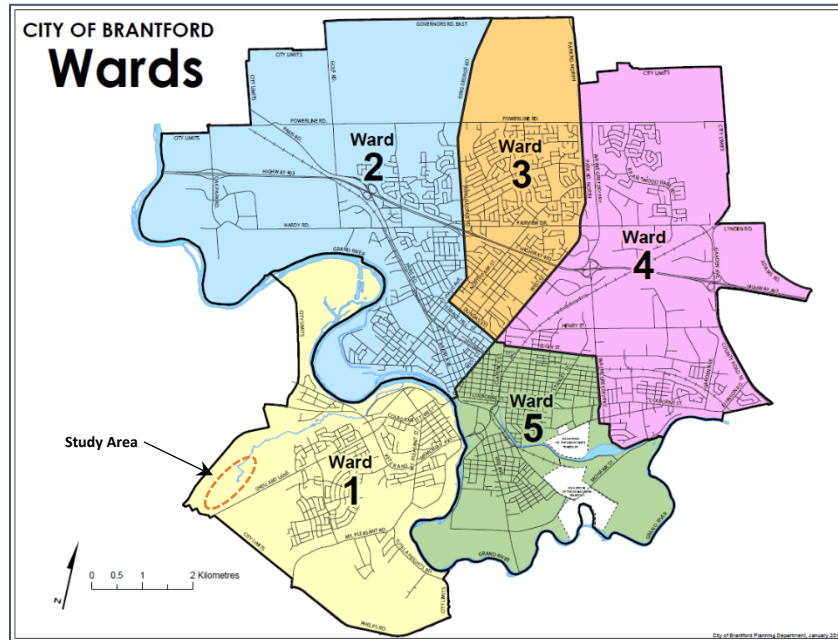
<https://www.rjburnside.com/shellard-lane-development> for review and the comments are requested by January 29, 2024.

This Comment Form provides you with an opportunity to offer your input to the Study. Your views are important to us. The comment form will take approximately 3-5 minutes to complete. All questions are optional.

Should you have any questions about the comment form or project, please feel free to contact the project team members:

Ben Jones
Senior Land Development Manager
LIV Communities
1005 Skyview Drive, Suite 301,
Burlington, ON L7P 5B1
Phone: 289-245-1300 ext. 522

Philip A. Rowe, C.E.T., EP.
Consultant Project Manager
R.J. Burnside & Associates Limited
1266 South Service Road, Suite C2
Stoney Creek, ON L8E 5R9
Phone: 905-821-5915



This document will be available in alternate format or with communication support, upon request. Information will be collected in accordance with the Freedom of Information and Protection of Privacy Act. With the exception of personal information, all comments will become part of the public record.

- This document will be available in alternate format or with communication support, upon request. Information will be collected in accordance with the Freedom of Information and Protection of Privacy Act. With the exception of personal information, all comments will become part of the public record.*

4. Are there any other comments/questions/suggestions the study team should consider?

For this stage of the integrated MCEA process, comments are requested by **January 29, 2024**. Responses to comments will be provided in a Public Information Summary Report along with a summary of your written comments and will be made available on the project webpage at:

<https://www.rjburnside.com/shellard-lane-development>

[] I/we wish to be added to the Project contact List to receive notices related to this project.

(Please Print Clearly)

Name: _____ Date: _____

Address: _____

Phone No.: _____ Email: _____